

Restrictive Measures Notifications (RMN)

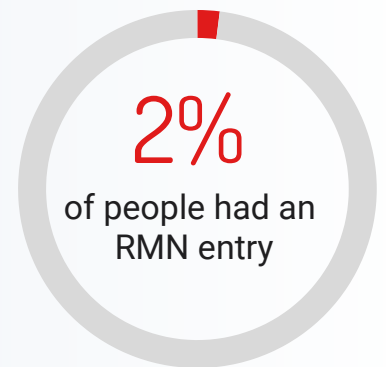
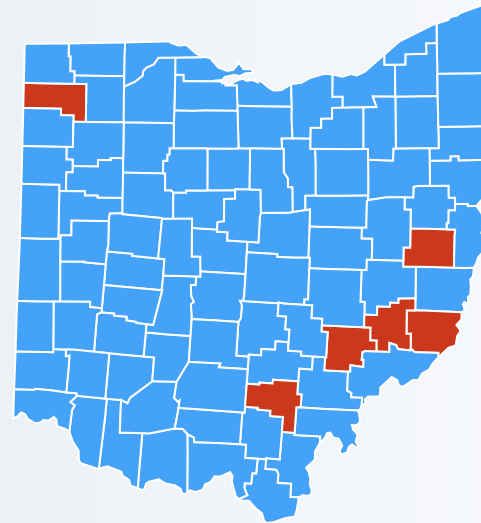
2018 Restrictive Measures Notification Data Analysis

The Restrictive Measures Notification (RMN) application keeps track of Restrictive Measures being implemented throughout the state of Ohio.

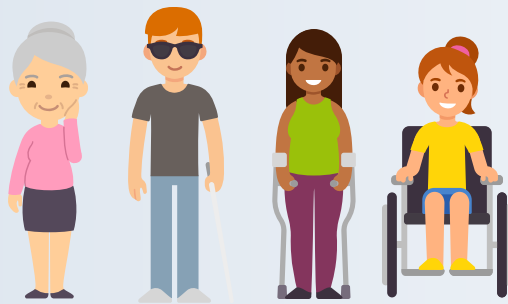
The Ohio Department of Developmental Disabilities, known as DODD, reviews the data entries from the RMN application to identify statewide training needs and barriers to supporting people with complex needs.

With the help of this data, DODD is able to provide training and technical assistance to providers that are supporting people with complex needs.

82 counties submitted an initial RMN entry in 2018. The counties in red did not have an initial RMN entry in 2018.

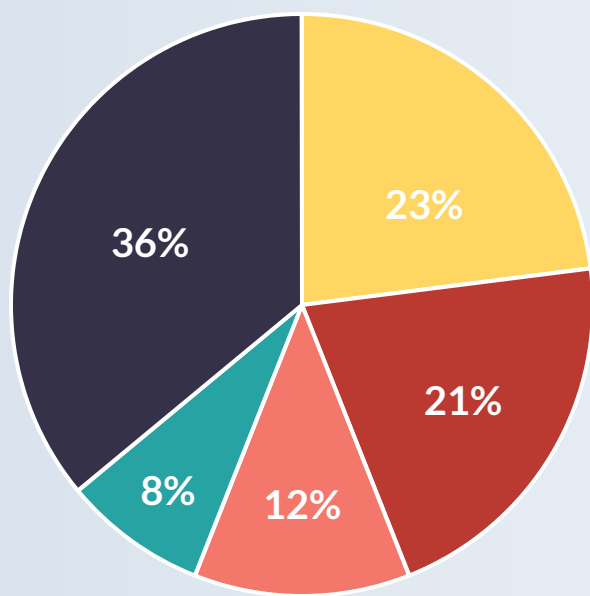


2,034 people had a submitted RMN entry with the average age being 34 years old



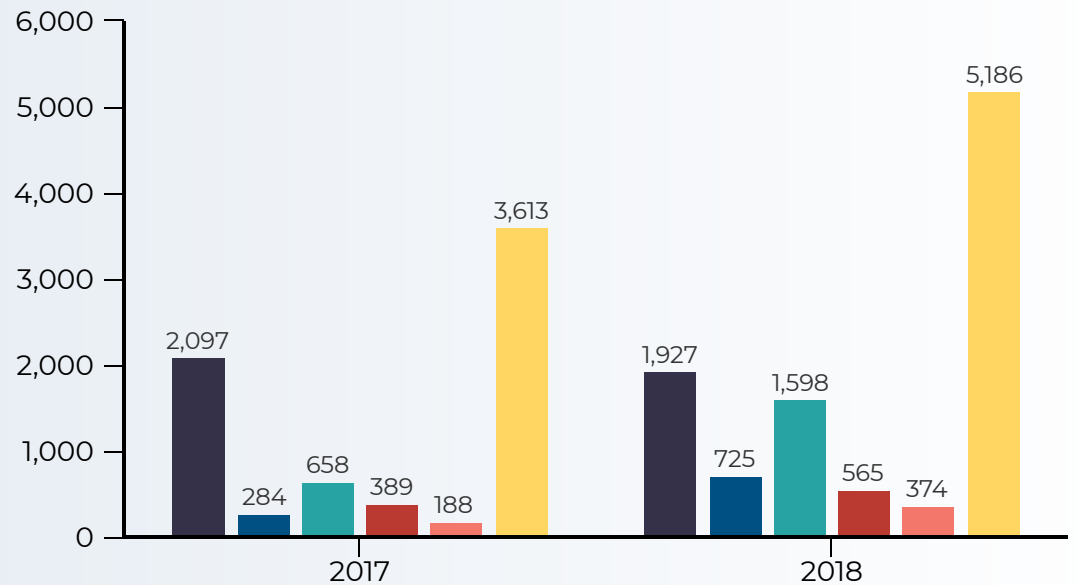
As of December 31, 2018, there were 93,290 active people being served by DODD. 2% of these people had a submitted RMN entry in calendar year 2018.

Level of Intellectual Disability (ID) for Those with an RMN Entry



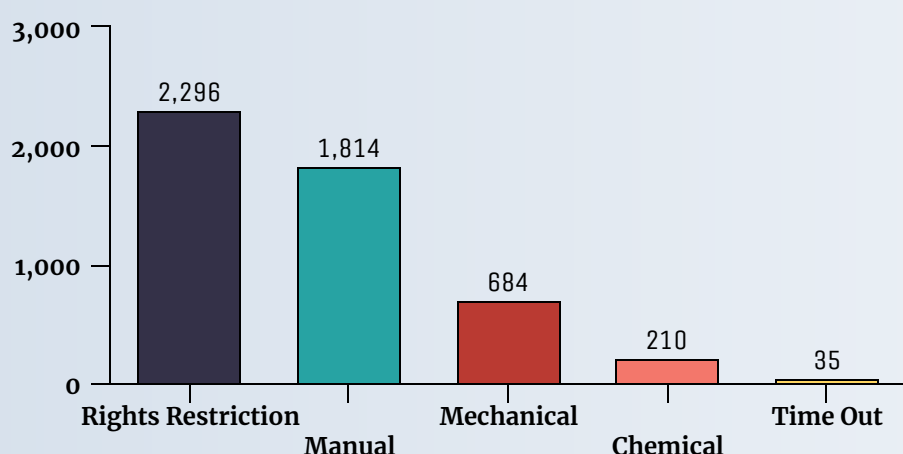
● Mild ID ● Moderate ID ● Severe ID
● Profound ID ● None/Unknown

Submitted RMN Entries over Time



● Initial ● Revision ● Annual ● Re-Annual ● Discontinued
● Total Entries

Type of Restrictive Measures Utilized



Type of Target Behavior Utilized

